

Since 1940

WISCONSIN ENERGY *Cooperative* December 2022 NEWS

TAYLOR ELECTRIC
Cooperative

Your Touchstone Energy® Partner



A CHRISTMAS CO-OP MYSTERY

HURRY UP AND WAIT.

ROTARY LIGHTS IN THE PARK

KIDS: DECORATE OUR
HOLIDAY PICTURE FOR
A CHANCE TO WIN A PRIZE





STETSONVILLE SUBSTATION UPGRADES UNDERWAY

Kenneth Ceaglske, President/CEO

We have been in the planning and design phase for upgrades at the Stetsonville Substation. The initial work of preparing the site for construction next summer has begun. The substation was built many years ago when clearances and location were not as critical. Crews have been unable to access the station in the winter due to

snowplow wind rows pushing up against the fence, and in the spring due to soft sub-soil conditions, not to mention the tight clearances inside the station making it a challenge to keep safe working distances. The new station will be located southeast of the existing station and will be built with only minimal disturbance to the existing station. Look

for more progress reports next spring as the construction really gets going.

Rate Adjustment

Final calculations are in place for the upcoming January rate increase. Again, there will be no change in the energy pricing; only the base fee will be adjusted to reflect changes in the fixed costs of operation of the cooperative.



Base rate change effect:

	2022	2023
Single phase	36.90	44.95
Single phase time of day	38.40	46.45
Three phase	63.80	71.85
Three phase peak alert	126.80	134.85



Christmas Wish

26 YEARS OF SPREADING JOY DURING THE HOLIDAYS

The Christmas Wish Program is celebrating 26 years of granting wishes to those in need during the holiday season. Taylor Electric Cooperative, WKEB 99.3 FM—WIGM 1490 AM, Touchstone Energy, and other area cooperatives are once again brightening the holidays for many in our community. Whether the need is financial, emotional, or physical, spreading holiday cheer and putting a smile on the faces of the families in our community has always been our mission.

In 2021, nearly 150 families were touched by the Christmas Wish program. In following with the cooperative principle “Concern for Community,” contributors to Christmas Wish have brought holiday cheer for the past 26 years to those who were battling a serious illness, friends and neighbors who had lost loved ones throughout the year, and community members with disabilities.

The 26th annual Christmas Wish Program is brought to you by area Touchstone Energy Cooperatives, including Dairyland Power Cooperative, Taylor Electric

Cooperative, Clark Electric Cooperative, Price Electric Cooperative, and Jump River Electric Cooperative. Also sponsoring are the Taylor County Association of Cooperatives, People’s Choice Credit Union, Co-op Transport, River Country Co-op, Ag Country Farm Credit, Taylor Credit Union, The Medford Cooperative, Lakewood Credit Union, United Mutual Insurance, WIGM 1490 AM and WKEB 99.3 FM Radio, RCU, and Medford County Market.

Wish Requests

Wish requests for area residents may be directed to WIGM/WKEB Radio; P.O. Box 59, Medford, WI 54451; phone, (715) 748-2566; fax, (715) 748-2752; or via the radio station’s website, www.k99wigm.com. Please include your name, address, and phone number as well as the name, address, and phone number of the individual you are making a wish for and the wish you would like granted. Requests are being taken now until December 16, 2022.

HEY KIDS!

Decorate this picture for a chance to win a prize!

Please bring your completed picture in person and receive a treat. **A drawing of all entries will be held on Friday, December 16, 2022.** Pictures will be displayed at the co-op office. Age groups include: 1–3 years, 4–6 years, 7–9 years, and 10–12 years. All participants' parents must be current members of Taylor Electric.



Name _____ Age _____

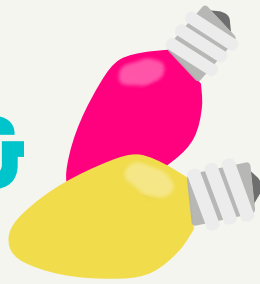
Parents' Names _____ Acct. No. _____

All employees' and directors' families are ineligible.



Keep Your Holidays

MERRY & BRIGHT



Don't add stress to your holiday season. Knowing how to properly use and hang lights could prevent injury or fire.



Make sure your home's electrical system can handle the load.



Unplug lights or decorations before changing a bulb or other parts.



Do not use cords or plugs that are damaged, frayed or cracked.



Only use lights certified by a reputable testing lab.



In addition, consider LED lights when replacing old light strands. LEDs use 80 to 90% less energy than incandescent bulbs.








Learn more:

 **Safe
Electricity.org®**

DECK THE HALLS SAFELY

There's nothing like putting up lights and decorations to get you in the holiday spirit. It's something that many do each and every year without incident, yet the holidays are also one of the most hazardous times of the year when it comes to electrical fires and accidents.

Safe Electricity offers several tips as you deck the halls this season:

-  When decorating outside, look up and around for power lines. Never throw lights or other decorations into trees near power lines.
-  Keep ladders, equipment, and yourself at least 10 feet from power lines.
-  Match plugs with outlets. Do not force a three-pronged plug into a two-pronged outlet or extension cord.
-  Outside, use only lights, cords, animated displays, and decorations rated for outdoor use. Follow the manufacturer's instructions on how to use them. Ensure outdoor outlets or extension cords are equipped with Ground Fault Circuit Interrupters (GFCIs).
-  Never string more strands of lights together than recommended by the manufacturer.
-  Do not staple or nail through light strings or electrical cords. Use plastic or insulated hooks to hang lights.
-  Do not attached cords to utility poles.

The outside of your home is not the only place where you need to be cautious of electrical dangers. Use care when placing and decorating trees inside your home. Place fresh-cut and artificial trees away from heat sources such as registers, fireplaces, and radiators. Water fresh-cut trees frequently. Keep electrical cords out of high-traffic areas, and don't run them under rugs or carpets where they could overheat. Turn lights off before you go to sleep. Use a timer to help.

Safe Electricity wishes you and your family a safe and happy holiday season. For more information on holiday safety tips, visit SafeElectricity.org.

COMMITMENT TO GRID RELIABILITY FUELS CHANGES TO WINTER LOAD MANAGEMENT

Grid reliability is at the forefront of strategic planning for utilities—from the regional Midcontinent Independent System Operator (MISO) all the way down to Taylor Electric Cooperative's system. To ensure generation resources are adequately available year-round, MISO recently changed its requirements for power providers, including our wholesale power provider, Dairyland Power Cooperative. This has resulted in modifications to our load management program.

As of Nov. 1, 2022, residential electric water heaters and auto-start generators enrolled in the load management program will no longer be part of the Peak Alert/Full Load Control schedule. Instead, they will be controlled in the following situations:

- During a Maximum Generation (Max Gen) Event a maximum of 16 times per year and no less than four times per year (once each season).
 - This does not include Max Gen Warnings that are sometimes called by MISO, but expire before advancing to a Max Gen Event.
 - A Max Gen Event can be declared at any time of the year. Participants will receive a notice at least two hours before their devices would be managed.
- Enrolled water heaters will still participate in economic control events when electricity prices are high in the MISO market, and local reliability events.

Residential water heaters and other accounts that are enrolled in Daily Energy Storage programs **will not** be affected by this full load control schedule change.

Additionally, winter full load control events will be split into morning and evening events December through February. A review of electricity peaks in the MISO system revealed that 60 percent of peaks occurred in the morning. To successfully reduce our electricity needs during the time of highest demands, enrolled dual fuel loads will be managed in the mornings, beginning at 6:55 a.m., with restoral starting at 10:05 a.m. Enrolled dairy water heaters, grain dryers, and manual stand-by generators will remain

on the traditional winter schedule of 4:55 p.m., with restoral beginning at 8:05 p.m.

"Taylor Electric has successfully managed our load management program for over 30 years. Through member participation, we reduce our need for electricity during

times of high demand and high electricity prices, which benefits the cooperative."

Ken Ceaglske, CEO

times of high demand and high electricity prices, which benefits the cooperative," Ken Ceaglske, CEO, said.

"As we adapt to ensure safe, reliable electricity, these changes to our program will continue to serve the best interest of all members."

The summer full load control program will remain unchanged (June through August) with the exception that residential electric water heaters will not be managed in the summer as they will be on the seasonal/Max Gen program.

For more information or to enroll in Taylor Electric's load management program, call 715-678-2411.



Kenneth Ceaglske, President/CEO

N1831 State Highway 13, Medford, WI 54451

715-678-2411 • 800-862-2407

email: taylrec@tayloelectric.org

website: www.tayloelectric.org

Lainie Kellnhofer, Editor

TAYLOR ELECTRIC
Cooperative



Your Touchstone Energy® Partner

