

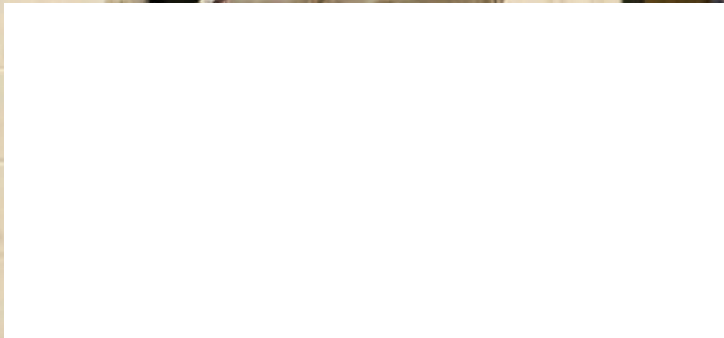
Since 1940

WISCONSIN ENERGY Cooperative NEWS

April 2017

The Front Line

Lineworkers are the backbone of reliable energy



TAYLOR ELECTRIC Cooperative

Your Touchstone Energy Partner



LIVES ON THE LINE

April 10 is Lineman Appreciation Day

Every year, we take the time to thank our extraordinary lineworkers who dedicate their lives to keeping the lights on in our local communities. Seven lineworkers maintain over 855 miles of line in Taylor Electric's service territory, and

without them, our world would be dark.

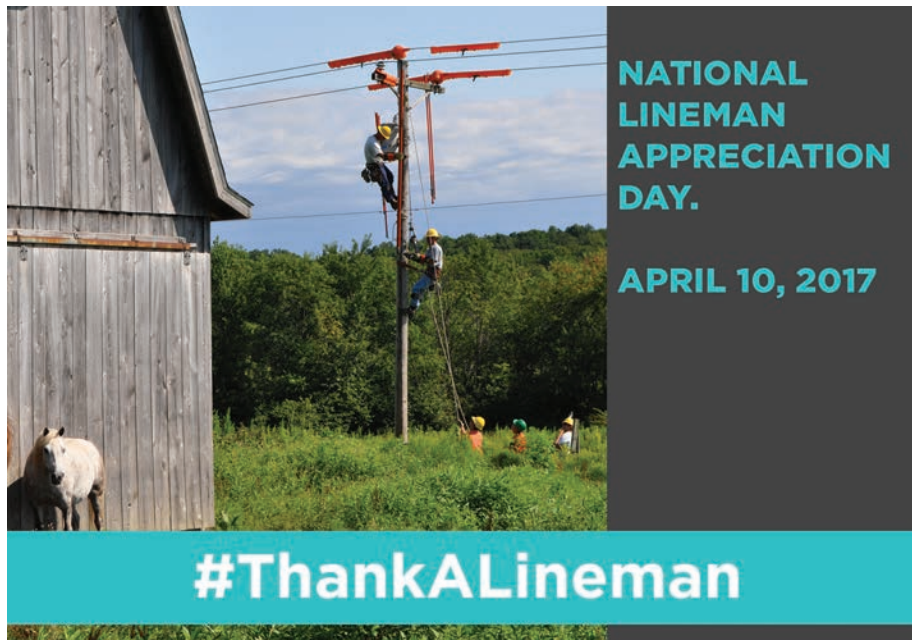
We depend on our entire staff to keep Taylor Electric running smoothly, but on April 10, 2017, we honor all lineworkers who often find themselves in dangerous and challenging situations, so our lives

may be a little bit brighter and safer every day. These brave people repair damaged lines and maintain critical infrastructure for our communities. Without their hard work and commitment to the job, our co-op would not thrive. No matter the time—day or night, weekday or weekend—if the lights go out, so do they.

Perhaps you have seen them raising their bucket trucks in howling winds and torrential rains, or in freezing, icy conditions. They work around the clock near high-voltage power lines until electricity is restored to every member in our co-op community.

In addition to aiding members in our local service territory, lineworkers are always willing and eager to volunteer when a neighboring community, county, or state is in need after a major outage occurs.

We hope you will join us in thanking the many lineworkers—both locally and around the world—that light our lives. Remember, your power works because they do! Use #ThankALineman on social media to show your support.



CAPITAL CREDITS TO BE ALLOCATED SOON

In the next month or two, you will receive a capital credit allocation notice from Taylor Electric Cooperative. In addition to your member number, the notice will provide your prior year's balance, total amount of your electric bills in 2016, your 2016 allocation, the amount returned in 2016, and your new balance. Members with more than one account will receive one combined notice.

To avoid confusion, there are three things you should know about your capital credit allocation notice:

- **It is not a bill, so do not pay the amount shown on the face.**
- **It is not a credit that can be used to pay an electric bill.**
- **There is no provision in Taylor Electric's bylaws to make early payment of capital credits to those members who leave the service area. It is important**

that we be provided with a current address so when the time comes to pay, we'll know where to mail the check.

The capital credit allocation notice represents the amount of ownership you have in your cooperative. In future years, this amount may be returned to you as a capital credit check. Meanwhile, your capital credits are an investment in the cooperative's electric distribution system. Member investments, capital credits, and long-term loans are the only sources of funding for the co-op; there are no outside investors.

You will receive a capital credit allocation notice only for the years in which you are a member of Taylor Electric Cooperative. It is a good idea to keep all of your notices with other important documents as a record for future years. Members with questions concerning capital credits are encouraged to contact our office.



We'll Help You Pay for College

Apply for scholarships by April 7

Taylor Electric Cooperative is awarding six \$500 scholarships to graduating high school seniors. Funding for the scholarship program comes from unclaimed capital credits.

Students living in households that receive their electric service from Taylor Electric and who will be graduating from high school in 2017 are eligible.

Final selection for the scholarship recipients will be made by the board of directors, with the cooperation of those schools involved. If you are interested, please complete the accompanying request form and return it to our office by April 7, 2017.

NOTE: The funds for these scholarships are derived from unclaimed capital credit refunds. Chapter 185 of the Wisconsin Statutes provides that unclaimed refunds may be used for educational and charitable purposes. Otherwise, they become unclaimed



Taylor Electric College Scholarship Application Request

Name _____

Name on Electric Account _____

Address _____

Phone No. _____ TEC Account No. _____

High School (or indicate if home-schooled) _____

Great GRILLING

starts at Taylor Electric Cooperative

Outdoor barbecue season is right around the corner! Get ready for it now by visiting Taylor Electric Cooperative, your local supplier for electric grills. Visit our office to see the electric grills we have on display; we try to keep all models in stock!



Meco Deluxe Cart Grill

\$180 each plus tax

- 215 square-inch cooking grid
- Temperature control knob
- Reflector pan allows for increased heat
- Fold-away wooden side tables



Meco Deluxe Electric Combo Water Smoker and Grill

\$95 each plus tax

- 1,650-watt heating element
- 351 square inches of usable cooking surface
- Two nickel-plated cooking grids with handles for two-level cooking
- Sliding access doors for checking and adding to the water and wood chip levels
- Built-in temperature gauge
- Flavor channels direct smoke for maximum food flavoring and add structural strength to the smoker
- Heavy-duty, reinforced steel legs for extra strength and durability



Meco Lock & Go Portable Grill

\$70 each plus tax

- Converts into a portable charcoal grill
- 214 square-inch cooking grid
- Double hood vents
- Locking hood for easy portability
- Stay-cool wooden handle
- Environmentally safe, high temperature, paint finish
- Thermostatic control for variable heat settings



ELECTRIC GRILLS:

Easy to use, easy to clean, economical to operate, no messy lighter fluid or gas fumes.
Pick up yours today and start grilling!



Taylor Electric Cooperative
**BRIGHT
 HORIZONS**

**Check out the new
 pricing and options
 now available!**

**WE'VE MADE IT EASIER AND MORE AFFORDABLE TO
 PARTICIPATE IN OUR COMMUNITY SOLAR PROJECT!**

- Purchase one unit of solar for \$886 or purchase half unit of solar for \$443.
- Can't pay all at once? No problem! Make monthly payments until the end of 2017.
- Now available for you to purchase and donate the output to your favorite local, non-profit organization.



Call us today at 715-678-2411!

**Our office will be closed
 Friday, April 14, for Good Friday.**



Michael Schaefer, President/CEO
 N1831 State Highway 13, Medford, WI 54451
 715-678-2411 • 800-862-2407
 email: taylrec@tayloelectric.org
 website: www.tayloelectric.org

Lainie Kellnhofer, Editor



Your Touchstone Energy® Partner 